

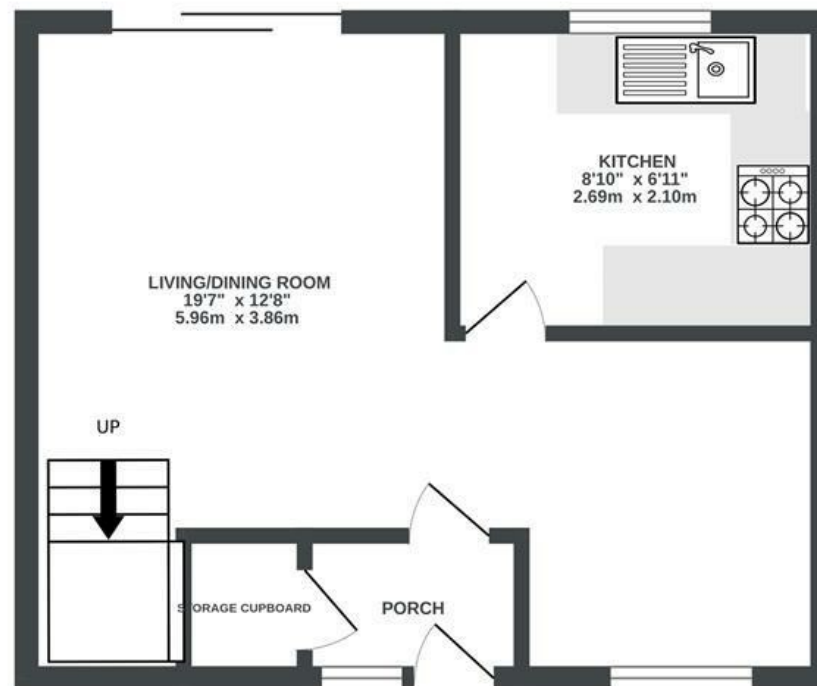
Pine Road

BRENTY

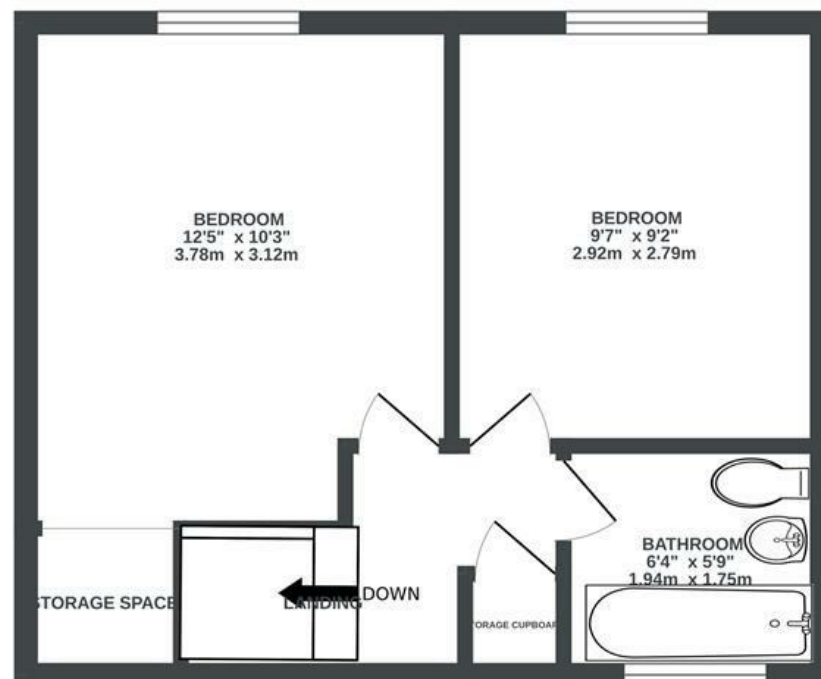
APPROXIMATE FLOOR AREA
58.8 SQM / 633 SQFT



GROUND FLOOR



FIRST FLOOR



Boardwalk

Pine Road

BRENTRY, BRISTOL



£300,000



2 Bedrooms



BS10 6RS



1 Bathrooms

"I've loved living on Pine Road for the last seven years. Being on a quiet cul-de-sac with nature all around has been a source of peace and relaxation, yet I'm still able to quickly and easily make my way to anywhere in Bristol. I will particularly miss the views from the garden. During the spring and summer you can watch the sun set on the far horizon, making it a great spot for a barbecue or evening drinks."

